

# CEILING DIFFUSER-LOUVERED FACE SQUARE-FLAT CDF200



## APPLICATION

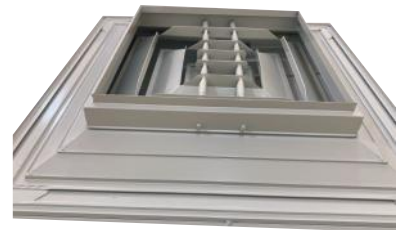
CDF series directional diffuser provides an aesthetically pleasing solution to air distribution requirements, regardless of room configuration

## FEATURED STANDARD CONSTRUCTION

- **FRAME:** Constructed from stamped aluminum sheet to fit 60x60 cm T-bar ceiling grid systems, mitered and welded frame
- **CORE:** Constructed from aluminum assembled using a series of integral stamped inner cores interlock to secure discharge vanes and preclude rattling
- **AIR PATTERN CORES:** Equipped with spring loaded latches, providing easy snap in/out core installation, no special tools required
- **THROW:** 4 way throw
- **FINISHING:** RAL 9010

## OPTIONS

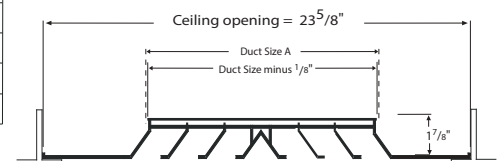
- Foam gasket on the back of the frame
- Square to round transition
- Any RAL color upon request
- Opposed blade damper
- Aluminum equalizing grid
- Plenum box (p. 3)



## STANDARD SIZES

Neck Size (inch)	Face Size (millimeter)	Assembly Type
6 x 6	595 x 595	Welded
9 x 9	595 x 595	Welded
12x12	595 x 595	Welded
15x15	595 x 595	Welded

*N.B: - For non standard sizes, please consult our engineers*





# CEILING DIFFUSER-LOUVERED FACE

## SQUARE-FLAT

### CDF200

#### Opposed Blade Damper:



#### Features

The aluminum opposed blade damper has gang operated blades that move in opposite directions when adjusted. The damper blades are lever operated and can be set in any position. Each setting provides a uniform straight flow of air through the damper. The damper blades are extruded for strength and stiffness, and interlock to assure a minimum of air leakage when closed. The damper blade operating mechanism is at an inside corner of the damper frame.

#### Aluminum Equilizing Grid:



#### Features

The aluminum equalizing grid for equalization of air flow, directional control and minor adjustments of air flow. Its is available as an accessory above the diffuser to provide uniform air flow over the surface of the diffuser face. The blades are individually adjustable one by one to allow additional control when needed.



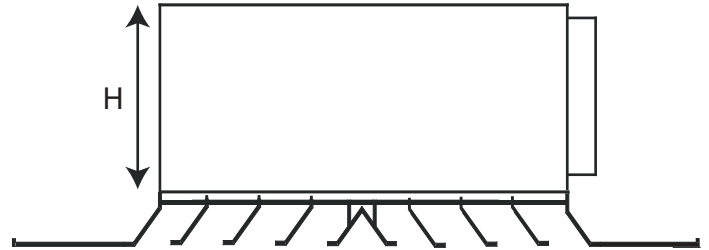
# CEILING DIFFUSER-LOUVERED FACE SQUARE-FLAT CDF200

## Plenum Box

### With Plenum Box Side Inlet

Minimum Inlet Size= 4"

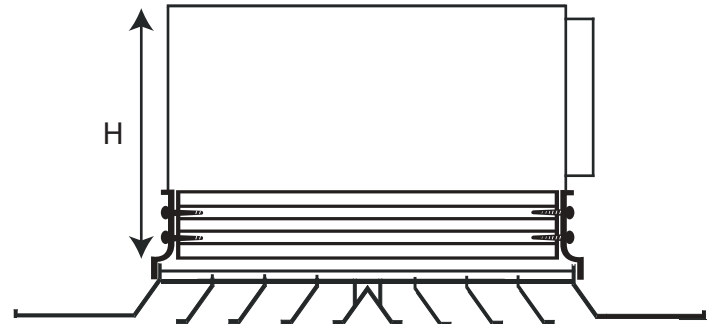
Height= Inlet + 2" + 1<sup>3</sup>/<sub>16</sub>"



### With ADG & Plenum Box Side Inlet

Minimum Inlet Size= 4"

Height= Inlet + 2" + 3<sup>3</sup>/<sub>20</sub>"



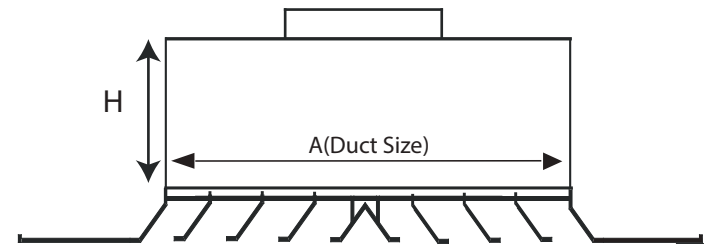
### With Plenum Box Top Inlet

Minimum Inlet Size= 4"

Maximum Inlet Size= A(duct size) - 2"

From inlet 4" to 12" H= 6<sup>1</sup>/<sub>16</sub>"

for inlet >12" H= 9<sup>9</sup>/<sub>14</sub>"



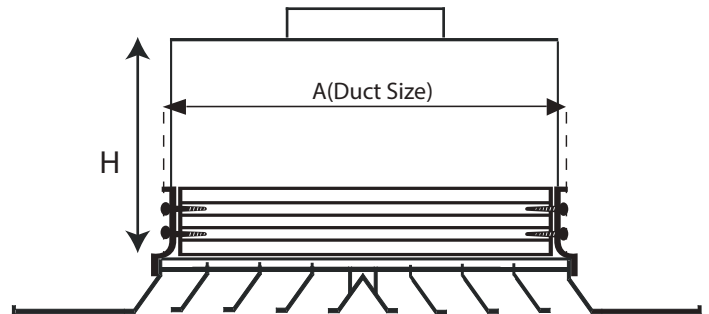
### With ADG & Plenum Box Top Inlet

Minimum Inlet Size= 4"

Maximum Inlet Size= A(duct size) - 2"

From inlet 4" to 12" H= 6<sup>1</sup>/<sub>16</sub>"

for inlet >12" H= 9<sup>9</sup>/<sub>14</sub>"





# CEILING DIFFUSER-LOUVERED FACE

## SQUARE CDF 200

### PERFORMANCE DATA

Size (inches)	Area Factor Ak	Neck Velocity FPM	200	250	300	350	400	500	600	700	800
			6x6	Neck Area (Sq. Ft.)	Velocity Pressure (in. w.g.)	0.003	0.004	0.006	0.008	0.010	0.016
6x6	Ak=0.106 0.242	CFM	48	60	72	84	96	120	144	168	192
		Pt (in.w.g.)	0.012	0.018	0.026	0.036	0.047	0.073	0.105	0.143	0.167
		N.C. (dB)	< 15	< 15	< 15	<15	16	20	26	30	34
		Throw (ft)	5-10	6-11	7-12	8-13	9-14	10-16	11-17	12-18	14-19
		CFM	109	136	164	191	218	273	327	382	436
9x9	Ak=0.208 0.545	Pt (in.w.g.)	0.015	0.023	0.033	0.045	0.058	0.091	0.131	0.178	0.233
		N.C. (dB)	< 15	< 15	<15	18	22	27	32	35	38
		Throw(ft.)	7-12	8-13	9-14	10-16	11-17	12-18	13-19	15-21	16-22
		CFM	194	242	291	339	388	485	581	678	775
12x12	Ak=0.339 0.969	Pt (in.w.g.)	0.018	0.029	0.041	0.056	0.073	0.114	0.164	0.223	0.292
		N.C. (dB)	< 15	< 15	< 15	20	26	30	35	39	42
		Throw (ft)	7-13	9-14	10-15	11-17	12-18	13-19	14-21	16-23	18-24
		CFM	302	378	453	529	604	755	906	1057	1208
15x15	Ak=0.475 1.51	Pt (in.w.g.)	0.019	0.030	0.043	0.068	0.078	0.119	0.171	0.233	0.305
		N.C. (dB)	< 15	< 15	15	21	28	33	38	42	46
		Throw(ft.)	6-13	8-15	10-16	12-17	14-19	15-21	16-22	18-24	20-25
		CFM	302	378	453	529	604	755	906	1057	1208

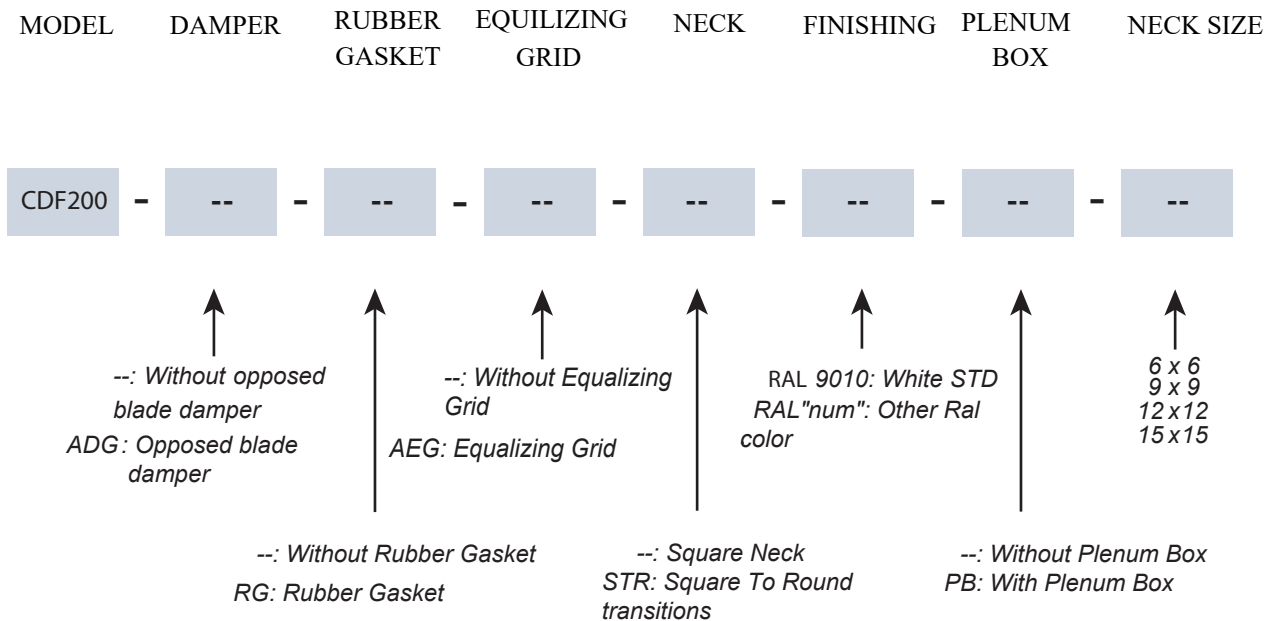


# CEILING DIFFUSER-LOUVERED FACE

## SQUARE-FLAT

### CDF200

### ORDERING INFORMATION



N.B: - The opposed blade damper model is: ADG-036  
 - For more information, please check the submittal sheet

### STANDARD SIZES

Neck Size (inch)	Face Size (millimeter)
6 x 6	595 x 595
9 x 9	595 x 595
12 x 12	595 x 595
15 x 15	595 x 595

N.B: - For non standard sizes, please consult our engineers

